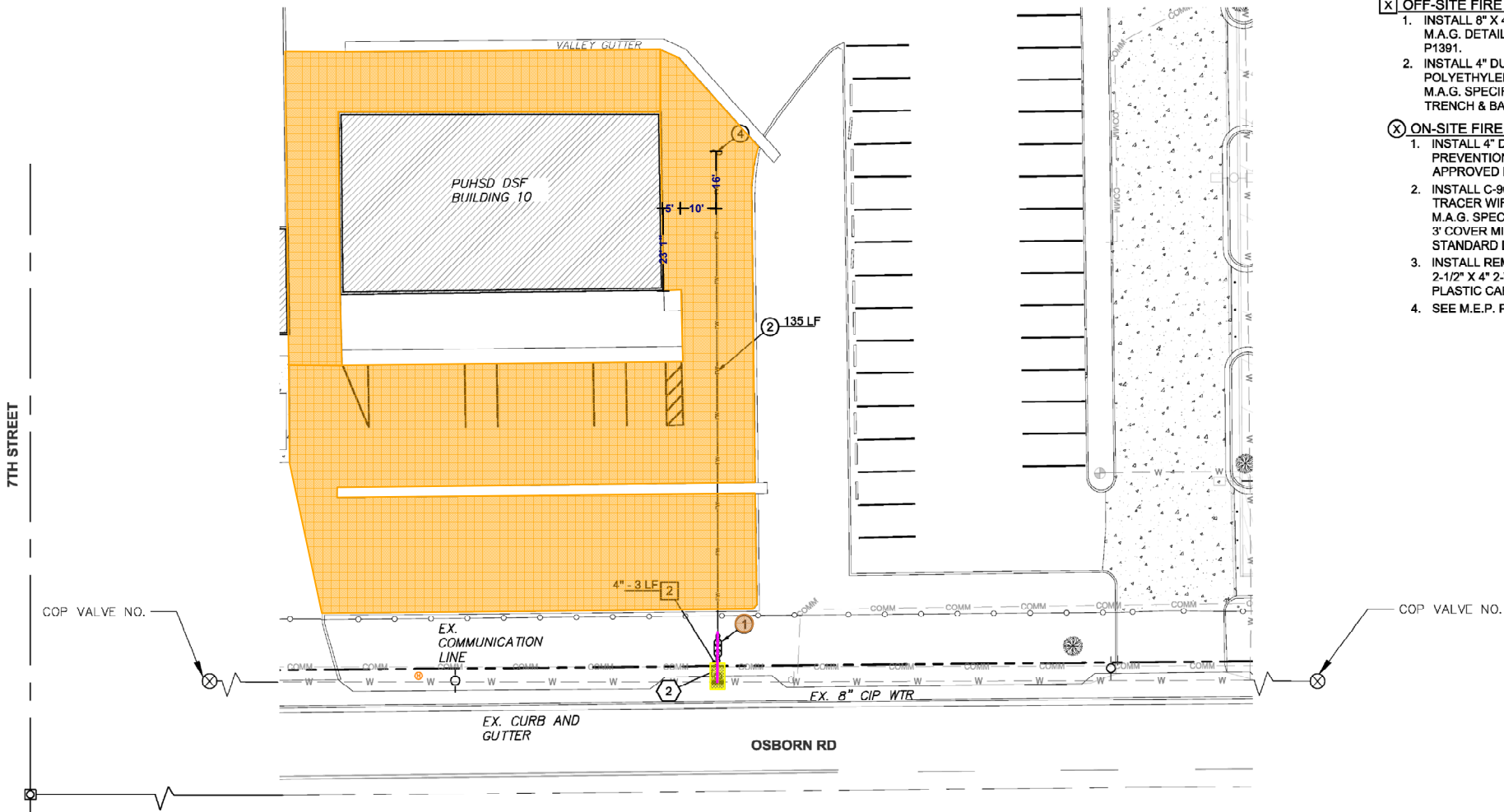


ONSITE & OFFSITE FIRE LINE PLAN FOR:
PUHSD DISTRICT SUPPORT FACILITY
2526 W OSBORN RD
PHOENIX, AZ 85017

LOCATED IN THE NORTHWEST QUARTER OF SECTION 25, TOWNSHIP 2N, RANGE 2E,
OF THE GILA AND SALT RIVER MERIDIAN, MARICOPA COUNTY, ARIZONA



- OFF-SITE PAVING NOTES**
1. SAWCUT EXISTING PAVEMENT, CURB, AND SIDEWALK TO LIMITS SHOWN OR NEAREST EXPANSION JOINT. REPLACE IN KIND.
 2. REPLACE PAVEMENT IN KIND. THICKNESS PER PER M.A.G. SECTION 336 AND C.O.P. DETAIL P1200, TYPE B.
 3. LIMIT OF ASPHALT RESTORATION.
- OFF-SITE FIRE LINE CONSTRUCTION NOTES**
1. INSTALL 8" X 4" TAPPING SLEEVE AND VALVE. BOX & COVER PER M.A.G. DETAIL 340 AND CITY OF PHOENIX SUPPLEMENT DETAIL P1391.
 2. INSTALL 4" DUCTILE IRON PIPE (PRESSURE CLASS 350) WITH POLYETHYLENE PROTECTIVE WRAPPING IN ACCORDANCE WITH M.A.G. SPECIFICATION 610. 3' COVER MINIMUM. LENGTH PER PLAN. TRENCH & BACKFILL PER C.O.P. STANDARD DETAIL P1200.
- ON-SITE FIRE LINE CONSTRUCTION NOTES**
1. INSTALL 4" DOUBLE CHECK DETECTOR BACKFLOW PREVENTION ASSEMBLY (ZURN MODEL 350DA OR APPROVED EQUAL) PER C.O.P. STANDARD DETAIL P1351.
 2. INSTALL C-900 POLYVINYL CHLORIDE (PVC) PIPE & TRACER WIRE (14 AWG MINIMUM) IN ACCORDANCE WITH M.A.G. SPECIFICATION 610. SIZE AND LENGTH PER PLAN. 3' COVER MINIMUM. TRENCH & BACKFILL PER C.O.P. STANDARD DETAIL P1200.
 3. INSTALL REMOTE FIRE DEPARTMENT CONNECTION. 2-1/2" X 4" 2-WAY 90-DEGREE FDC WITH BREAKAWAY PLASTIC CAPS AND IDENTIFICATION SIGN.
 4. SEE M.E.P. PLANS FOR CONTINUATION.

LEGEND & ABBREVIATIONS

— M/L —	MONUMENT LINE	G	GUTTER
— — —	RIGHT-OF-WAY	GR	GRATE
— — —	PROPERTY LINE	LS	LANDSCAPE
— — —	EASEMENT LINE	MH	MANHOLE
— — —	CENTERLINE	MTR	METER
— S —	EXISTING SANITARY SEWER	P	PAVEMENT
— E —	EXISTING ELECTRIC	PROP	PROPOSED
— CATV —	EXISTING COMMUNICATIONS LINE	PUE	PUBLIC UTILITY EASEMENT
— 14.15 —	EXISTING CONTOUR	RW	RIGHT OF WAY
— 14.15 —	PROPOSED CONTOUR	SB	SETBACK
— — —	CURB & GUTTER	SSWR	SANITARY SEWER
— — —	PROPOSED FIRE LINE	STL	STEEL
— — —	TAPPING SLEEVE & VALVE	TC	TOP OF CURB
B/C	BACK OF CURB	TYP	TYPICAL
B/W	BACK OF WALK	WTR	WATER
BLDG	BUILDING		
C	CONCRETE		
C&G	CURB AND GUTTER		
CIP	CAST IRON PIPE		
CO	CLEAN OUT		
COP	CITY OF PHOENIX		
CMP	CORRUGATED METAL PIPE		
DIA	DIAMETER		
ESMT	EASEMENT		
EX	EXISTING		
F/C	FACE OF CURB		
FDC	FIRE DEPARTMENT CONNECTION		
FFE	FINISHED FLOOR ELEVATION		
FL	FLOWLINE		

- Reseal existing parking lot after asphalt patch from fireline install - Q1 1,458 SY
- Install 4" DIP C-350 w/ PE protective wrapping per MAG Spec 610 - Q1 14 LF
- Install 4" Double Check Detector Backflow Prevention Assembly - Q1 1 EA
- Replace pavement in kind (MAG Section 336 + COP Detail P1200 Type B) - Q1 30 SF

1838 W PARKSIDE LANE
PHOENIX, AZ 85027
WWW.AMENTPRO.COM
OFFICE: 480-656-0191
INFO@AMENTPRO.COM



**PUHSD
DISTRICT
SUPPORT
FACILITY**

CITY OF PHOENIX

**CONSTRUCTION
DOCUMENTS**

DATE	DESCRIPTION
05/02/2022	50% DRAFT



CHECKED BY: KMT
DRAWN BY: DAK
TITLE:
FIRE LINE PLAN

SHEET No.
2 of 2
PROJECT No.
20026